

erie
Family Health Centers



**2025
ANNUAL REPORT**

**Resilience
in action:
Connected
by care**



OUR MISSION

Motivated by the belief that healthcare is a human right, Erie Family Health Centers provides high-quality, affordable care to support healthier people, families, and communities.

OUR VISION

All people living their healthiest lives.

ON THE COVER. Sarah Hahn, MD (right) poses with Medical Assistant Timerra Dunnock and her family, patients Joshua and Gianna Garner.

THIS PAGE. Tracy Irwin, MD, Hospira Foundation Endowed Medical Director of Reproductive Health, stands in the hallway of Erie Sankofa Village Health Center.

Resilience in action: Connected by care

DEAR FRIENDS,

This past year tested our communities. As government actions and policy changes threatened the health, safety, and stability of individuals and families, Erie Family Health Centers (Erie) remained focused on protecting access to high-quality healthcare and strengthening our collective resilience.

The opening of Erie Sankofa Village Health Center reflects that commitment. Located in Chicago's West Garfield Park community, Erie's newest location brings fresh hope to a neighborhood long affected by disinvestment, declining population and income, and poor health outcomes.

Erie Sankofa Village Health Center is an anchor of the Sankofa Village Wellness Center, the realization of a community-led vision and a powerful example of resilience through collective voice, collaboration, and mutual support.

Amidst this expansion, a rapidly shifting landscape affected both Erie and the broader community, creating an environment of fear, anxiety, and confusion. Cuts to insurance access threaten to weaken the healthcare system for all of us.

Despite these headwinds, Erie remains persistent in our pursuit of equitable access to high-quality healthcare. Our mission unites us and drives us forward, even when progress is slow or interrupted. Our resilience grows when we support each other. Good health doesn't happen alone. Over the last seven decades, Erie has continued to recognize that it is built through partnership, compassion, and connection.

This past year, Erie's staff, partners, volunteers, and supporters stepped up in new and thoughtful ways to protect our patient's access to safe, evidence-based care. Because of this collective effort, Erie continues to be a national community health leader in preventative care, diabetes management, heart health, cancer screening, reproductive health, and more. The health outcomes for Erie patients rank #1 among health centers in Illinois, reflecting our unrelenting commitment to quality.

A strong, high-performing Erie stands as a trusted place to turn when so much feels uncertain for our patients, staff, and community.

This year reminded us that resilience is not a singular act—it is a shared commitment strengthened through connection and care. Thank you for standing with us, and for helping us build healthier communities.

In good health,

Brian P. Marsella

Brian P. Marsella
Chair, Board of Directors

Lee Francis

Lee Francis, MD, MPH
President and CEO



2025 by the numbers

Figures are from 2025 Uniform Data System (UDS)

growing our impact

Erie is providing integrated and holistic care to more patients than ever before.

95,878
total patients

16,334
patients received oral care

7,357
patients received behavioral health care

400,085
total patient visits

17%
visits provided via telehealth

caring for diverse communities

Erie provides high-quality care to a wide range of patients.

200+ Zip Codes
99 Languages Spoken

67% Hispanic/Latino
48% Prefer a language other than English

62% Female
43% Under 18

62% Medicaid
23% Uninsured

improving health outcomes

Last year, Erie delivered high-quality care across the lifespan, making a measurable difference in patients' lives, including:

ENSURING A HEALTHY START



89%
patients entered prenatal care in the first trimester

3,221
patients gave birth, ranking Erie

#1
in Illinois for deliveries, and

#6
nationwide

3,669
maternal and child case management patients, ranking Erie

#1
in Illinois for patients served

MANAGING CHRONIC DISEASE

1 in 10
Erie patients has diabetes, of whom

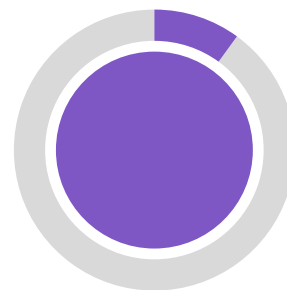
75%
are successfully managing their diabetes

PATIENTS RECEIVING RECOMMENDED SCREENINGS AND PREVENTIVE SERVICES

92%
children received oral health sealants

85%
screened for cervical cancer

69%
screened for colorectal cancer



Erie ranked in the **top 10%** among community health centers nationally for the quality of our care.

welcoming workplace

Erie strives to create a culture where our teams feel valued and supported to do their best work.



strengthening our team

Our shared belief in Erie's mission, vision and values unites us.

912
staff, of whom there were

251
healthcare providers, and

154
staff who have worked at Erie >10 years

201
health professionals in training

care outside the exam room

Erie offers a wide array of programs and services between appointments to remove barriers to good health and help patients live their healthiest lives.

45%
of all patients received personalized 1:1 support between visits

273,000
outreaches to patients reminding them to stay up to date on services

12,000+
linkages to resources by Erie's Social Drivers of Health team, including

6,000+
patients connected to home medical equipment like blood pressure monitors, walkers, breast pumps, and glucometers

80% of one's health status is determined by factors outside the exam room

SOURCE: Commonwealth Fund (2023). Let's Get it Right: Consistent Measurement of the Drivers of Health

care delivery sites

Erie serves patients at **14** health centers spanning the West Side of Chicago to Waukegan.

8 primary care centers

- ERIE DIVISION STREET *dental onsite*
- ERIE EVANSTON/SKOKIE *dental onsite*
- ERIE FOSTER AVENUE *dental onsite*
- ERIE HEALTHREACH WAUKEGAN *dental onsite*
- ERIE HELPING HANDS
- ERIE HUMBOLDT PARK *dental onsite*
- ERIE SANKOFA VILLAGE *dental onsite*
- ERIE WEST TOWN

5 school-based health centers

- ERIE AMUNDSEN
- ERIE CLEMENTE
- ERIE JOHNSON
- ERIE LAKE VIEW
- ERIE WESTSIDE

1 teen & young adult center

- ERIE TEEN CENTER

11 hospital partners

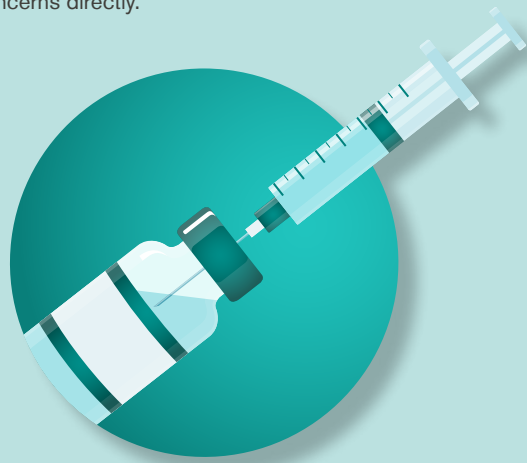
- ENDEAVOR HEALTH
- EVANSTON HOSPITAL
- HIGHLAND PARK HOSPITAL
- SWEDISH HOSPITAL
- HUMBOLDT PARK HEALTH
- ANN & ROBERT H. LURIE CHILDREN'S HOSPITAL OF CHICAGO
- NORTHWESTERN MEDICINE
- CATHERINE GRATZ GRIFFIN LAKE FOREST HOSPITAL
- NORTHWESTERN MEMORIAL HOSPITAL
- PRIME HEALTHCARE
- ST. FRANCIS HOSPITAL
- SAINT MARY OF NAZARETH HOSPITAL
- RUSH UNIVERSITY SYSTEM FOR HEALTH
- VISTA HEALTH SYSTEM

2025 spotlight stories

A shot at good health: Vaccine education helps families make informed decisions

PARENTS JUST WANT TO DO WHAT'S BEST FOR THEIR CHILDREN. BUT WITH CONFLICTING MESSAGING IN THE NEWS, MORE PARENTS ARE UNCERTAIN WHETHER TO GET THEIR CHILDREN VACCINATED.

Erie believes that vaccines are safe and one of the most effective tools we have to prevent serious and potentially life-threatening diseases. To support patients and their families, Erie launched a focused campaign to encourage childhood vaccination by addressing parental fears and concerns directly.



Erie staff build trusted relationships with families over time, creating space for open conversations where parents can ask questions and feel confident in their decisions. We trained staff on how to have effective, non-judgmental conversations about vaccination during clinic visits. We sent tailored messages and made calls to patients due for immunizations. Erie also worked to remove barriers that can make staying up to date on vaccines difficult. We held walk-in flu vaccine fairs, and ensured vaccines were always in stock so families could always access them during appointments.

While vaccination rates at community health centers are trending downwards across the Illinois and the nation, Erie's rates are steadily increasing, protecting not only individual children, but also helping keep families and communities healthy.

Advancing early autism diagnosis



Early identification of autism can make a profound difference in children's social and emotional development and ability to reach their full potential.

This past year, Erie strengthened early detection and reduced delays in diagnosis by embedding autism screening into routine visits, completing more than 2,100 initial screenings to identify children who may need further evaluation.

Even when screenings identify children at highest risk, families face wait times of up to three years to see a specialist for a formal diagnosis, delaying access to essential services. To address this gap, Erie partnered with Ann & Robert H. Lurie Children's Hospital of Chicago (Lurie) on a shared initiative to expedite diagnosis.

Now Erie clinicians trained by Lurie can diagnose autism among the highest risk children right in the health center, reducing delays, helping families access services during a critical window for development, and positioning more children for stronger long-term outcomes.

Care that meets the moment

ERIE'S COMMUNITIES WERE AFFECTED BY NUMEROUS FEDERAL POLICY CHANGES IN 2025.

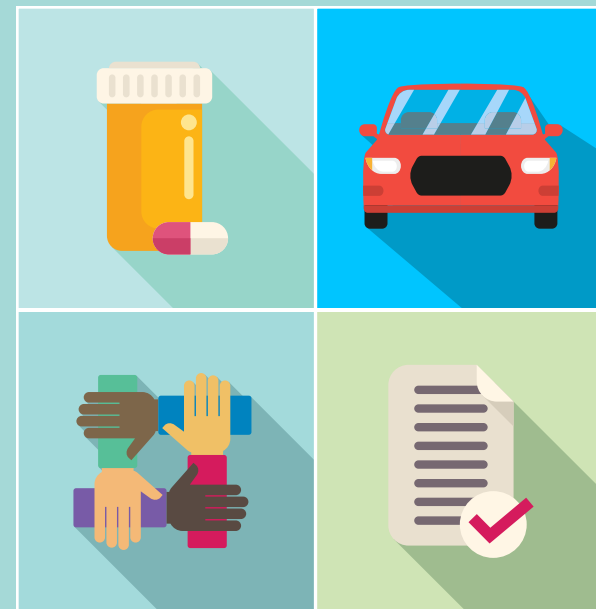
Last year, many patients and neighbors navigated heightened governmental actions that made them afraid to leave their homes. Higher grocery prices and disruption of SNAP/food stamp benefits left people without food on the table. Looming reductions to Medicaid and rising marketplace insurance costs created economic anxiety about receiving care.

Erie's Social Drivers of Health (SDOH) team is trained to provide 1:1 support for patients navigating these threats to their health and wellness. They helped patients understand their legal rights, helped create family safety plans, and provided linkage to legal services. They assisted patients anxious about taking public transit to appointments with free Uber rides, converted their visits to telehealth, and assisted in setting up mail prescriptions. They helped patients find and register for local food pantries and food distribution events.

Erie welcomes all people, regardless of where they come from, how they identify, or their ability to pay for services because healthcare is a human right.

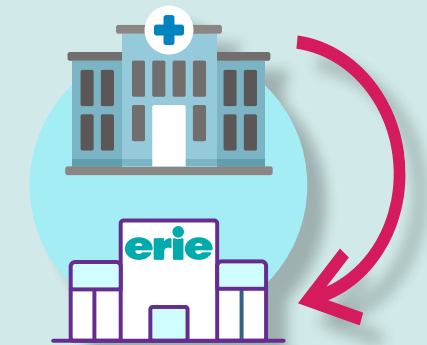
"Our patients don't have to navigate challenges alone. The SDOH Team is here to help remove barriers to their health and wellness."

LACEY JOHNSON
Associate Director of Patient Programs, SDOH



From the ER back to Erie: supporting transitions of care

Leaving the hospital is a vulnerable time for patients. An organized transition back home and to the patient's primary care provider helps prevent medication errors, readmissions, and other negative health impacts.



Each month, Erie care teams receive more than 2,200 alerts about their patients who have either been admitted to the hospital or have visited the emergency department. This year Erie implemented a data-driven approach to following up with and supporting these patients using its electronic health records system. While care teams contact all patients after a hospital visit to encourage them to return for follow-up care at Erie, they provide additional outreach and support to patients with more complicated medical or social needs. Through these efforts along with strengthening coordination with hospital partners, we are assisting patients in reconnecting to care back at Erie more quickly, improving continuity of care.

Resilience in action: Connected by care

Good health doesn't happen in isolation; it is nurtured through high-quality care, community support, and trusted relationships. These connections are the foundation of resilience during uncertain times. On the following pages, you'll see how the Erie community is stepping up to meet the moment. Together, we are expanding care to new communities, strengthening a talented and committed workforce, and helping our neighbors access the care and support they need to live their healthiest lives.

Medical Assistant Team Leader Shanika McIntosh (right) checks Jasmin Saltos' blood pressure during a prenatal appointment as her partner Carlos Hernandez stands by her side.

Screening to save lives

68% of eligible Erie patients completed a colon cancer screening in 2025, which exceeds the **59%** national screening rate.

"I didn't have any symptoms at all. I didn't feel anything," says Nelson Martinez, a patient at Erie Humboldt Park Health Center. But because he turned 45, his Erie provider Dr. Leonardo-Francesco Marti-Roy recommended a routine colorectal cancer screening. It was an at-home test designed to catch early warning signs. The results came back positive for cancer risk.

From there, things happened quickly. Dr. Marti-Roy referred Nelson for a colonoscopy at a hospital partner. That exam confirmed cancer, but it was small and caught early. Within two weeks, Nelson met with a specialist at Endeavor Health Swedish Hospital who recommended surgery.

"You can't imagine how it feels when someone is told they have cancer," Nelson shares. "The moment you receive the news, you just fall apart . . . Fortunately for me, I have my wife who accompanies me to all my appointments and is always by my side."

It's been an intense and difficult process. While he is still going through treatment and recovery, he feels optimistic about his long-term health. At a recent visit, his cancer

specialist emphasized how critical early detection had been. "He told me to congratulate Dr. Marti-Roy for the prompt action he took in sending me to get the colonoscopy," Nelson says.

Nelson is not alone. Today, about 1 in 5 new colorectal cancer cases occur in people under 55. To address this trend, Erie has taken a multidisciplinary approach to increase colorectal screening rates starting at 45 years old. Erie's population health team sends reminders and screening kits with instructions to eligible patients while providers offer reminders and support during medical visits. Sixty-eight percent (68%) of eligible Erie patients completed a colon cancer screening in 2025, which exceeds the 59% national screening rate.

Nelson underscores the importance of consistent, high-quality, and affordable primary healthcare access—

"You have to make time to go to your primary care doctor and see them because by addressing things early, a lot of worse things can be avoided!"



In 2023, Erie launched a project to boost colorectal cancer screening rates and ensure follow-up colonoscopies for patients 45 and older, focusing on those never screened. Through community education, outreach, patient support, and hospital partnerships, screening rates rose to 68% in 2025 from 49% in 2023, earning Erie the Grand Prize in the 2025 American Cancer Society National Colorectal Roundtable National Achievement Award.



Nelson Martinez's (left) cancer journey began when his provider Leonardo-Francesco Marti-Roy, MD recommended an at-home colorectal cancer screening test.



Longtime Erie patient Michelle Gordon-Petty (right) meets with her provider and Erie Sankofa Village Site Medical Director Kawana Tharps, DNP, APRN, FNP-C.

Expanding access to healthcare in West Garfield Park

When Erie Sankofa Village Health Center opened just five minutes from Michelle Gordon-Petty's house in February 2026, she didn't hesitate. She was among the first patients to visit Erie's newest health center located in the West Garfield Park neighborhood of Chicago.

Michelle has been an Erie patient for more than two decades. Her children grew up receiving care at Erie, too. What keeps Michelle coming back is the trust she built with her care team, which includes Erie Sankofa Village Site Medical Director and family nurse practitioner Kawana Tharps, DNP, APRN, FNP-C. Michelle says —

"I love Erie. My providers have always listened to my concerns."

Michelle feels the same about Dr. Tharps, describing her as "passionate and empathetic."

Really listening to patients and building partnerships is a cornerstone of Dr. Tharp's care philosophy. It is also foundational to the development of Erie Sankofa Village. The site is on the third floor of the Sankofa Village Wellness Center, the result of a community effort led by the Garfield Park Rite to Wellness Collaborative. After years of collaboration and community input, anchor partners Erie, the YMCA of Metropolitan Chicago, and Rush University Medical Center, alongside other partners, have opened their doors at the corner of Madison and Kildare.

Dr. Tharps and her team are excited to bring Erie's signature comprehensive medical, dental, and behavioral healthcare and supportive services to local residents. Unique to Erie Sankofa Village, patients can access our partners' services in the same building, including workforce training, drop-in childcare, fitness facilities, a gymnasium, and a future café.

"The West Side of Chicago is home for me. I spent my early years in Garfield Park. Not only have I seen the effects of disinvestment in Black communities, I've lived it," says Dr. Tharps. "I understand how important it is for projects like Sankofa Village Wellness Center to exist."



Erie Sankofa Village Director of Health Center Operations Geoyia Nightengale (left) works with Patient Benefits Advocate Odalys Crespo to ensure that patients are welcomed and registered for appointments.

"We did a lot of listening to West Garfield Park residents during the planning process to make sure Erie Sankofa Village provides services that the community wants and deserves. We hope these services help lower the 20-year life expectancy gap between residents of West Garfield Park and those of the Loop."

GEOYIA NIGHTENGALE, MPH
Director of Health Center Operations
Erie Sankofa Village

Investing in a mission-driven, resilient workforce

When Karah Scott is asked about her Erie career journey, she has a short answer and a long answer. She joined Erie Evanston/Skokie Health Center as a Medical Assistant (MA) trainee in 2017, but her story begins years before.

"I've been a patient at Erie Evanston/Skokie since high school; I had my daughter at Erie, and then one day my provider recommended I look into an MA certification program," Karah says. She took her provider's advice and has been growing her skills to support Erie providers and patients ever since, first as part of her MA training, then as a full-time MA, and now as an MA Team Leader.

Last year, Karah joined colleagues from across Erie sites and departments at a workforce development program called Erie Academy. There, they participated in three full-day sessions designed to enhance their self-awareness, expand their leadership toolkit, and gain valuable insights from other colleagues. They left prepared to lead in new ways and to utilize their strengths to best support their teams, and ultimately, Erie patients.

The sessions focused on types of communications styles and approaching crucial conversations with colleagues have been most useful to Karah: "Erie Academy always stays in the back of my mind as I'm working with my team."

More than 100 Erie team members have participated in Erie Academy since its October 2024 launch. Born from employees' desire for additional training and supported by an endowment gift from The Grainger Foundation, Erie Academy offers curriculum developed by Erie and grounded in its culture, teams, and mission. The first series of training focused on leadership development for managers, supervisors, and team leaders.

Based on positive feedback from participants, Erie Academy is expanding in 2026 to reach more employees across the organization. Over time, Erie Academy will continue to develop as a program where Erie staff are supported, challenged to grow, and given opportunities to lead. The benefits will ripple outward to the people and communities they serve.

"I try to create a good team workflow with strong communication so that patients feel comfortable with us and have a better dental experience!"

▼ **JACQUELINE GUADARRAMA**
Erie HealthReach Waukegan
Dental Assistant Team Leader



"I feel motivated to grow my skills to become a better leader for future positions in the healthcare space!"

▲ **MONCERRAT LLAMAS**
Social Drivers of Health Care
Coordinator



"Erie Academy helped me think about how I can facilitate training and development opportunities for my team!"

CARLA JONES
Senior Director, Front End
Revenue Cycle Operations

"I appreciate that Erie is willing to invest in employees' growth. And not just career growth, but interpersonal growth!"

ALDRIN DELORIA
IT Service Desk Team Leader

"I feel like I'm able to show up for my team—and they're also showing up. We're getting it done together!"

KARAH SCOTT
Erie Evanston/Skokie
Medical Assistant Team Leader



Championing the right to high-quality healthcare

Erie hosted US Senator Dick Durbin (IL) during National Health Center Week to advocate for protecting Medicaid and highlight the breadth and quality of services that community health centers provide to 52 million people across the United States.



Advocacy leadership recognized nationally

Dalia Galvan Morales, Director of Government Relations and Business Strategy, received NACHC's Elizabeth K. Cooke Advocacy MVP Award, recognizing her leadership in ensuring patients' needs are at the forefront of legislative discussions.



Spotlighting policy's real consequences

IL State Senator Graciela Guzman toured Erie Helping Hands Health Center to learn how cuts to Medicaid, the 340B program and the Health Benefits of Immigrant Adults program would negatively impact our patients.



Exploring community costs of Medicaid cuts

Erie HealthReach Waukegan Health Center hosted a roundtable with Congressman Brad Schneider on the potential impact of Medicaid cuts on Lake County residents.



Shaping tomorrow's nursing workforce

Erie's *AdvancingPractice* Fellows joined other nurses from across Illinois in Springfield to advocate for meaningful change in healthcare policy and help shape the future of the in-demand nursing profession.



Protecting 340B and reproductive health access

Dr. Tracy Irwin, Dr. Faiz Jiwani and CEO Dr. Lee Francis met with IL State Representative Rita Mayfield on the Illinois Primary Healthcare Association Advocacy Day to champion the 340B program and reproductive health access.

advocacy

RESILIENCE IN ACTION

amplifying our voices

The Erie community showed up to advocate for our patients when their access to healthcare was threatened in 2025.

Together, we fought proposed Medicaid cuts that will reduce primary care access and overwhelm emergency rooms. We defended the 340B Drug Pricing Program, which lowers patients' medication costs and helps health centers stretch limited financial resources. And we gave greater voice to our belief that healthcare is a human right.

Erie staff, Board members, and patients traveled to Washington D.C. and Springfield, participated in roundtables and rallies, and welcomed elected officials to our health centers to illustrate the real impact of policy decisions. Alongside Erie supporters and other healthcare advocates, we made countless calls and sent emails to our lawmakers. This collective advocacy reflects a shared belief that everyone deserves the right to access healthcare in safe and welcoming environments.



AIDS RUN/WALK: one step at a time

A record 70 volunteers ran and fundraised to support vital services for Erie patients living with HIV/AIDS during the AIDS Run & Walk Chicago.



ADOBE WRAP PARTY: smiles in large supply

Carrying on an annual tradition, Adobe team members donated and wrapped gifts for Erie families during the holiday season.



BANKS FUNDRAISER: helping young patients bloom

Betsy and Bill Banks welcomed friends for a breakfast fundraiser in their garden. Their daughter, Erie pediatrician Dr. Laura Banks, shared the impact of connecting children with books through the Reach Out and Read program.



ERIEDESCENCE: Erie donors are a cut above

Eriedescence 2025 partygoers played the world's largest game of rock-paper-scissors, just one of the night's lively activities to raise funds for patient programs and resources.



FOOD DISTRIBUTION: healthy foods, healthy families

Volunteers, staff, and community members gather monthly to hand out healthy foods at Erie HealthReach Waukegan's recurring food distribution events, hosted in partnership with the Northern Illinois Food Bank.



LAKE FOREST PLACE COMMUNITY: thumbs up for healthcare

Lake Forest Place residents organized a panel discussion on practical ways to support healthy aging. The Lake Forest Place knitting club donated their signature handmade blankets and hats for Erie babies.

community

RESILIENCE IN ACTION

stepping up to meet needs

Care grows through connection.

At a time when many in our community are facing growing uncertainty and barriers to health, the Erie community came together, to do what they can to support one another. Over the past year, these actions have taken many forms: organizing supply drives, hosting gatherings to introduce new people to Erie's mission, packaging essentials, and finding creative ways to raise funds to support families. These moments, big and small, reflect what it means to be connected by care. When people work together toward a shared vision of a healthier future, burdens feel a little lighter, support a little closer, and challenges a little less overwhelming.

Erie's generous donor community helps patients access essential healthcare that keeps them healthy, resilient, and connected by care.

FY25 FINANCIAL HIGHLIGHTS

Protecting and expanding access

Your generous contributions advance uninterrupted healthcare and supportive services for people and communities across the Chicago region.

REVENUES (at year end, dollars in millions)

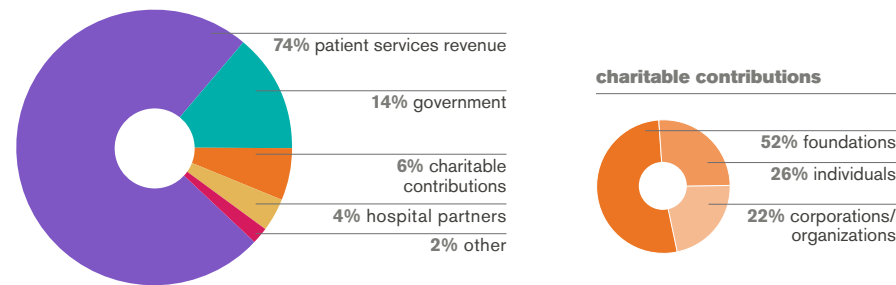


Caring community

Your investment makes comprehensive care possible for patients regardless of where they come from, how they identify, or their ability to pay for services.

TOTAL FUNDING SOURCES

Erie's FY25 income totaled \$126,509,534

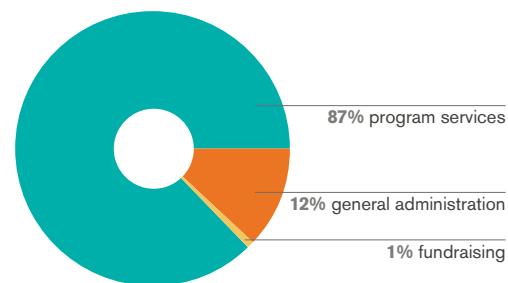


Strength in connection

Your partnership sustains Erie's exceptional, holistic healthcare services to help more people live their healthiest lives.

FUNCTIONAL EXPENSES

Erie's FY25 expenses totaled \$122,527,253



For the audited Erie FY25 Financial Statements, click on the QR code or go to <https://erie.health/fy25financial>



DEAR PARTNERS AND FRIENDS,

We are filled with tremendous gratitude for you and the collective strength of Erie's community.

We believe healthcare is a human right, and should not be a test of endurance. It should not require navigating complex systems, overcoming unnecessary barriers, or providing strength in the face of hardship. In Erie's vision of the future, everyone has the opportunity to live their healthiest life because they have access to healthcare that is affordable, holistic, and high quality.

While the safety nets people depend on felt frayed this year, we witnessed a powerful display of collective resilience in action.

In 2025, we were heartened to hear a common refrain from donors, supporters, and funders: "How can I help?" We saw resilience not as a burden placed on individuals and families, but as a shared commitment. We saw a community coming together to protect and expand access to care through giving, volunteering, advocating, fundraising, and inviting others into Erie's mission.

On the following pages, you will find a list of more than 1,600 donors who made a contribution between July 2024 and June 2025. Thank you to our longtime supporters and new friends for investing in medical, dental, and mental healthcare and for helping ensure access to programs and resources between visits for more than 95,000 people across the Chicago region.

Every dollar raised by Erie Family Health Foundation goes directly to support essential programs and services according to donor intent.

In addition to this critical operating support, we are grateful to donors who contributed capital gifts to make Erie Sankofa Village Health Center a reality, totaling \$6.85 million.

We are most resilient when we support each other—a truth our patients, staff, and champions demonstrate every day. Thank you for helping build a future where accessing healthcare is not a test of endurance, but a clear and compassionate path to health and wellness.

Sincerely,


Melissa Hilton
Executive Director
Erie Family Health Foundation


Gauri Brown
Board Chair
Erie Family Health Foundation



Thank you to our generous donors

CAPITAL GIFTS

Erie Sankofa Village Health Center, West Garfield Park

Cumulative Capital Gifts from July 2023 to March 2026

\$1,000,000 and above

US Department of Health and Human Services, Health Resources and Services Administration (HRSA)
Schreiber Philanthropy

\$500,000-\$999,999

Hunter Family Foundation
The Harry and Jeanette Weinberg Foundation

\$250,000-\$499,999

Illinois Children's Healthcare Foundation (ILCHF)
Seedlings Foundation

\$100,000-\$249,999

Anonymous
Eleanor and William Revelle

\$50,000-\$99,999

Ann & Robert H. Lurie Children's Hospital of Chicago
Lee Francis and Michelle Gittler

Up to \$49,999

Gauri and Matt Brown
Linda Cushman and William G. and Joan Kistner
Christine and Eric Strobel

Site-Based Support at Erie Humboldt Park

Capital Gifts from July 1, 2024 to June 30, 2025

\$100,000-\$299,999

City of Chicago Department of Planning and Development

OPERATING GIFTS

Annual Gifts from July 1, 2024 to June 30, 2025

Public Sources

Chicago Department of Public Health (CDPH)
Chicago Public Schools (CPS)
Cook County Health
Ela Township

Illinois Department of Human Services (IDHS)

Illinois Department of Public Health (IDPH)

Lake County

Libertyville Township

Niles Township

Substance Abuse and Mental Health Services Administration (SAMHSA)/Impact Behavioral Health

US Department of Health and Human Services, Health Resources and Services Administration (HRSA)

Vernon Township

Vernon Township Community Mental Health Board

Wauconda Township

Waukegan Township

Academic Partnerships

AllianceChicago

Ann & Robert H. Lurie Children's Hospital of Chicago

Endeavor Health

National Institute for Medical Assistant Advancement (NIMAA)

Northwestern University

OCHIN, Inc.

University of Chicago Medical Center

University of Illinois Chicago

CORPORATIONS, FOUNDATIONS, ORGANIZATIONS AND INDIVIDUALS

\$1,000,000 and above

Endeavor Health

Northwestern Medicine

Schreiber Philanthropy

The Grainger Foundation

\$500,000-\$999,999

Lundbeck US Charitable Fund

The Abbott Fund

\$200,000-\$499,999

AllianceChicago

Crown Family Philanthropies

Hunter Family Foundation

Knight Impact Partners

Polk Bros. Foundation

Tony Valukas and Cathy Beres

\$100,000-\$199,999

Anonymous

AIDS Foundation Chicago (AFC)

Elizabeth Morse Genius Charitable Trust

Finnegan Family Foundation

Hearst Foundations

The Cigna Group Foundation

\$50,000-\$99,999

Anonymous (2)

AbbVie Foundation

Illinois Primary Health Care Association (IPHCA)

Joanne and Jeff Burgess JAB2 Fund

Lee Francis and Michelle Gittler

Rachel Kohler and Mark Hoplamazian

Lloyd A. Fry Foundation

Medical Home Network (MHN ACO)

Sisyphus Supporting Foundation

The M and S Giving Fund

The Brinson Foundation

UnitedHealthcare (UHC)

VNA Foundation

\$25,000-\$49,999

Anonymous (2)

Blue Cross and Blue Shield of Illinois (BCBSIL)

Bowman Lingle Foundation

D & R Charitable Fund/ Glasser Family

Evanston Community Foundation

Mary and Paul Finnegan

Grant Healthcare Foundation (GHF)

Irvin Stern Foundation

National Association of Community Health Centers (NACHC)

North Shore Gas | North Shore Gas Community Fund

Northern Trust Foundation (NFT)

Siragusa Family Foundation

Stephen Proudman and Laura Kohler

Susan and Stephen Baird Family Foundation

Jill Simon Svoboda and John Svoboda

United Way of Metropolitan Chicago

West Side United

Wilson-Garling Foundation

NFP

\$10,000-\$24,999

Anonymous (3)

Matt Aaronson and Kate Sanderson

ALLSTAR Partners

Arnold Family Foundation

Helen and Duane Binns

William Cape

Cretors Family Foundation

Linda Cushman

Lawrence and Charlotte Damron

Kent and Elizabeth Dauten

Delta Dental of Illinois Foundation

Elizabeth Beidler Tisdahl Foundation

Florence and Laurence Spungen Family Foundation

Francis Beidler Foundation

Foundation for Equity and Justice

Paul Francis

Fresenius Kabi USA, LLC

The Honorable Susan and Mr. Scott Garrett/ Garrett Family Foundation

Grand Vein Specialists LLC

Healthcare Foundation of Northern Lake County

Amy Morrison Heinrich and Rob Heinrich

Illinois Public Health Institute (IPHI)

Kaufman Family Foundation

Pascale and Thomas Kichler LabCorp

David Leib and Anne Gendler OCHIN, Inc.

Thomas Oczkowski

Patrick and Anna M. Cudahy Fund

Peoples Gas Community Fund

Purple Group

Eleanor and William Revelle

Andrew H. Rubenstein

Jeffrey Rubenstein

Richard and Charlotte Smith

Carl and Donna Stapleton

The Lehman-Stamm Family Fund

The Trustmark Foundation

Tom Russell Charitable Foundation

Washington Square Health Foundation

Lolli Zariin

\$5,000-\$9,999

Betsy and Bill Banks

Bernstein Private Wealth Management

Nancy Bock and Doug Fendon

Gauri and Matt Brown

David Buchanan and Lacinda Hummel

CIGNA HealthCare

Ann and Russ Covode

Catherine L. Crimmins

Adriana Diaz

Dr. Scholl Foundation

Fifth Generation, Inc.

First Presbyterian Church of Libertyville

Lara Gartner and Nathan Burleson

GEM Realty Capital Inc.

Carol Gittler

Stephen Hagerty and Lisa Altenbernd

Harry S. Black & Allon Fuller Fund

Edith Harte and Karl Matlin

Rachel Hayman and Ed Michael



FROM LEFT: Elena Rodriguez, Santiago Jalapa, Miriam Jalapa

Caroline Hoke

Hurckes Family Foundation

William G. and Joan Kistner

Leopardo Companies

Kim Lynch

Brian P. and Michele Marsella

Eric and Sarah Mayeda

Mercer Health and Benefits

Nancy and Dave Napalo

OneDigital Investment Advisors, LLC

Lisa Paccione and Melissa Robbins

Sara Paretsky

Dan Reinberg and Susie McMonagle

Rush University Medical Center

Deborah Russell

Mary and Jeffrey Sherman

Peter Stille

The Henderson Foundation

The Kellcie Fund

The Zivin Family Foundation

University of Illinois Chicago – School of Public Health

\$2,500-\$4,999

Ellen and Michael Alter

Daniel and Rosalind Alvarez

American Cancer Society (ACS)

David Ansell and Paula Grabler

Charles Barone and Susan Keiffer

Amy and Mark Blumenthal

Mr. and Mrs. Norman Bobins, The Robert Thomas Bobins Foundation

Brenda Fowler

CDW

Victoria Chiou

Mark Davis

Judith Eastridge

Michele and Tom Foley

Steven Geiermann

George M. Eisenberg

Foundation for Charities

Craig and Michal Golden

Gould & Ratner

Miranda Hart and Jacob Shapiro

Melissa Hilton and Jonathan Perman

Humboldt Park Health

Illinois Chapter, American Academy of Pediatrics (ICAAP)

Jacob Best Foundation

Nicole Kazee and Andrew Lewis

Kedzie Lawrence Plaza LLC/ Mohammad Zaffark

Laurence E. Herman Family Foundation

Leva Family Foundation

Nina Litton Graf

Paul and Nancy Maddrell

Partners in Performance/ Claudia Wyatt-Johnson and Rick Johnson

Sara and Ted Naureckas

Nixon Peabody

Olivia Bea Ross Foundation

Paul and Amy Pedersen

David Rahija

Esmeralda Ramirez and David Moreno

Ross Family Foundation

Beatriz Setrini

The New Harbor Charitable Foundation

Amy Valukas and Paul Brinkmann

Robin Varnado and Dean Loizou

David and Lynne Weinberg

Val and Rob Weiss

Michael Wendt

West Monroe

\$1,000-\$2,499

Anonymous (3)

Advis, Inc

Diana Avarca

Bonnie and Michael Balkin

Laura Banks and Tashio Martinez

Belcore Electric/ Anthony and Kathryn Belcore

Marjorie Craig Benton

Paul and Lisa Blumberg

Christopher Boisselle

Calvine and Charles Bowen

Harte Brick

Caryn and Charles Brissman

David and Wendy Bruce

John and Barbara Byrne

Robert Cape and Amy Armstrong

Fay Clayton

Antonia J. Contro and George Marquisos

Terrence Conway and Judith Neafsey

Peter and Denise Costello

Adam Dajani

Sandra Del Toro

Carolyn Dickens

Ann E. Doege

Lisa and Joel Dykstra

Katie East and William Najem

Elizabeth Ester and Michael Brody

Andrew Ewbank

Jean and Andy Fies

Willard and Anne Fraumann

Lauren Gallagher

Eric and Abby Gastevich

GCS Charitable Fund

Sandra and Franklin Gelber

Lindsay and James Gifford

Kathleen Gillespie and Debra Shore

Betsy and Bruce Gladfelt

James and Tiffany Gruber

Christine and Tyler Harshey

Avery Hart and Nina Black

Nathaniel Hart

Highland Park Community Foundation (HPCF)

Robert and Carol Hirschtick

Sandra Hutson

Tracy Irwin and Maria Pyra

Samuel Jackson

Alison Poorvu Jaffe and Daniel Jaffe

Peter Jones and Marian Pearcy

Cathy Junia and Andrew Cierny

Marie Kaufman

Hannah Keel

Kirkland & Ellis Foundation

Susan Swider and John Rogers
 Brittany Tadesse
 Tim and Maureen Hunter Charitable Foundation
 Thomas Toser
 Matt and Jeanne Turner
 Heidi Voorhees
 Elliot Weisenberg and Clara Orban
 Forrest Whittaker

\$500-\$999

Anonymous
 Timothy and Jessica Achtstatter
 AFSCME Retirees Chapter 66
 Brian and Julie Alcalá
 Rosalie Alicea and Robert Tutman
 Alona Anspach
 Elora Apantaku
 Andrew Aronsohn
 Michael Attaway
 John and Carol Balkcom
 Edward Bancroft
 Michael Barin
 Douglas Batesky and Maura Kennedy
 Tom Bauer
 Meredith Baumgartner
 Christopher Benning
 Aviva and Tom Bowen
 Therese Brandenstein
 Lawrence and Ann Hartman Brown
 Joel Buchanan
 Lisa Buckley
 Susanna Bunta
 Thomas Carter
 Philip and Meg Cavanaugh
 Erin Cavanaugh and Terence Carmichael
 Justin Chen
 Tana Chongsawat
 Justin Chura
 Ronald Cohen and Helen Kim
 Kevin Conlon
 Frank Connet
 Amanda Dauten
 Megan Doyle
 Kristin Estandarte
 Carly Faison
 Elizabeth Finseth
 Neil Fisher and Meryl Loonin
 Kelly Fitzpatrick
 Kevin Flores
 Andrew Foley and Danika Barry
 Paul Fruhwirth and Adam Rowe
 Judy and Jerrold Frumm
 Stephanie L. Gallo

Linda Gilpin
 Celeste Goering
 Nancy H. Greenwalt
 Jill and Frank Gross
 Linda Hall
 Lauren Herskovic
 Douglas Hough
 Jake Howell
 Sarah K. Howie
 Christine Junia-Trias and Derick Trias
 Catherine Kallal and Maurice Lemon
 Lauren and Patrick Keenan-Devlin
 Eileen and Gerard Kelly
 Jason Kephart
 Mary King
 Mary Knight
 Jeffrey and Beth Kopin
 Joan Kopinski
 Nancy Kotz-Joob
 Sarah and Robert Kuchar
 Meredith LaMaster
 Kathleen Laslo
 Ian and Debbie Lesch
 Karen and Robert Lewis
 Jose Lopez
 Denise C. Macey
 John Mancini and Lucinda Fox
 Anita McCarthy
 Jeanine McGrath and Merlin Robb
 Carine and Robert McGreevey
 David Mckean
 Jacqueline McSparron
 Deborah Midgley and Brian Gladstein
 Annet Miranda
 Lory Mishra and Brian Kibbe
 Vanessa Mohr
 Valerie Montague
 Tom and Jeanne Morizio
 Laura and Robert Murphy
 Julia Parzen
 David Prabhu
 Rachel Ramaswamy
 Charles Randall
 Vera Rigolin and Keith Dunn
 Margaret Russell
 Lois Sachs
 Gordon Schiff and Mardge Cohen
 Judith and David Schiffman
 Kristin Sedlacek
 Sara Segal-Loevy and Steven Loevy
 Haviland and Ayal Sharvit
 Shawnalee R. Shaw
 Iliana Solorzano
 Deborah Sontag

Glen Spear and Myra Wagner
 Stuart Strong and Kris Beck
 Aparna Sundaram
 Darryl Tom
 Meredith and Keith Travers
 Sherry and Peter Trezise
 Gloria Kot and Gintaras Vaisnys
 Lewis Warrick
 Lauren Weber
 Carol Wendt
 Adrienne White-Faines
 Angela Yu
 Julie and Mark Zerwic
 Kathy Zhu

\$250-\$499

Anonymous (2)
 Alma Aguila
 Shawn Aranha
 Maria D. Ascencio
 Beth and Jim Ashley
 Christopher Benavente and Julia Yoshino Benavente
 Kate and Jack Birdwell
 Nancy Boszhardt
 Matthew Brahm
 Jami Burkart
 Jill Capobianco and Stephen Barlock
 Phillip Cathlina
 Stepnicka Charitable Fund
 Lisa Coburn
 Skip Coggin
 Lois Cohen
 Elaine Coldren and Ross Goetz
 Rebeca Covarrubias
 Lisette Craft
 Raymond Curry and Kristi Kirschner
 Charese David
 Kevin Davis
 Paul Decker
 Mari Diaz
 James and Sara Downey
 Don and Barbara Enns
 Rovee A. Fabi
 Clark and Linda Federer
 Victoria Fernandez
 Julie Francis and Howard Drossman
 Kevin and Amy Golden
 Claire and Thomas Goulding
 William and Mary Greene
 Frances Griffin
 Gena M. Grospe
 Kate Grossman and Peter Fiddler
 Jessica and Dane Hellriegel
 Seth and Sally Hemming
 Tanairi Herrera
 Jennifer Hill



FROM LEFT: *Arely Contreras, MD, Maritza Lopez, Rhino Rivera, Jonathan Wong, APRN*

Doug and Linda Honnold
 Eugene Hotchkiss III
 Susan Howell
 Samantha Hunter
 B. Craig and Jane Hutson
 Daisy Jaime Guzman
 Natalie Jinete
 Faiz Jiwani
 Mary and Michael Joss
 Karmariah M. Joyce
 Natalia Kaplan
 Steven Karvelius and Annabell Ren
 Caty and Jim Kearney
 Debra Kerr
 Anoop Koshy
 Rachel Krause and Adam Helman
 Vicki Kuo
 Therese Laslo
 Caitlin Lassus
 Carolyn Lickerman
 Josie Llana
 Kate Maehr and Sam Pickering
 Bridget and Patrick Magner
 Mary and Tim Marnell
 Allee E. McDaniel
 Sebastian McGreevey
 Betsy and Mark McKelvey
 Daniel Mendoza
 Michael Mulach
 Carol Mullins
 Geoyia Nightengale
 Owens Lynn
 John and Katie Palmer
 Jung Panambo-Kantoff and Howie Kantoff
 Manas Parikh
 Janki Patel
 Libbey Paul
 Feyce M. Peralta
 Elizabeth Peterson
 Jesse and Elizabeth Peterson Hall
 Katrina Barone
 Ronald and Queta Bauer

Nicole and Michael Quien
 Ruth Reiner
 Giannina Riccardi
 Elizabeth Roberts
 Hannah Rowell
 Joseph Sampson
 Joanne Sarroza
 Hugh Semple
 Anita and Gautam Shah
 Kaleb Sholey
 Jaclyn Sliger
 Amy Solas
 Desiree Solis
 Zachary Spreitzer
 Matt St Peter
 Ingrid and Bill Stafford
 Daniel Stutzman and Sadie LaPonsie
 Kimberly K. Taylor
 Kawana Tharps
 Kay Christ and Don Tomei
 Lizette Torres
 Aurora Trnka
 Patti Tuomey
 Maria Choca Urban and Steven Urban
 Janice C. Valukas
 Jaclyn and Tom Walsh
 Gail Warner
 AJ Washington
 Katie Waymack
 Ashley Wells
 Jennifer Wojnar
 Derek Wolken
 Jonathan Wong
 Paula Worthington and Bruce Meyer
 Daisy Wynn
 Sunita Zalani

\$100-\$249

Anonymous (12)
 Hannah Adams
 Leslee and Danilo Adriano
 Susan Agate
 Syed Mustafa Alavi
 Maria Esther Almanza
 Carly Altieri
 Dorothy S.T. and Charles R. Alves
 Aimee Anderson
 Victoria Anglin
 Karen Appleby
 Laura April
 Alejandra Ayala
 Erica Bahena
 Marcie Baker
 Rebecca Ballantine
 Susan Bandes
 Elizabeth Bankoff and James Zuehl
 Katrina Barone
 Ronald and Queta Bauer

Kathleen Behner
 Elizabeth Bennetts and Ron Chitekwe
 Janet Bennick
 Betzy Berganza and Jorge Castellanos
 Maria De La Luz Bernabe Munoz
 Payal Bhatt
 Nina Binkowski
 Bijoy Bordoloi
 Binoy Bordoloi
 Christina Bowers
 Malin Bowers
 Micaela Bowers
 Michael Boyd
 Gillian Brautigam
 Sylvie Brick and Roman Yevstihnyeyev
 Sander Brissman
 Amy Brooks
 Christina E. Brown
 Sheryl Bruce
 Carol Ann and Jerry Burin
 Brenda and Walter Bushala
 Jerome Buster
 Michelle Byrne
 Edie Canter and Fred Wellisch
 Adriana Carrasco
 Jean Casper
 Christina Cedeno
 Ernest and Sarah Chang
 Michaela Ciulla
 Robert and Carolyn Clarick
 Kathy Clark
 Richard R. Clark and Melanie Hammond Clark
 Teri Clifton
 Emily Colby
 Nancy and Vito Coletto
 Dan Collins
 Grace Connelly
 Alexandra Cooke
 Nancy and Ron Coolley
 Rachel Copenhaver
 Olivia Corrado and Tommy McDonald
 Cindy and Alan Curley
 Shira Danan
 Elyssa Davis
 Mary DeBartolo
 Cassandra Del Valle
 Alex DeLeon
 Lena Dennison
 Ariel and Steven Derringer
 Rick Desai
 Luis Diaz
 Helena Dickens
 Olivia Dixon
 Monica Drane
 Meredith and Phil Dray
 Tamra Drees

Lauren Driscoll
 Kathryn and Neil Driscoll
 Matt Duda
 John and Jennifer Dudek
 Jane and Tim Eaton
 John Edinger
 Annie Elliott
 Cindy Perez
 Celia Faison
 Amy and Bob Faison
 Robert Faison
 Noureen Faiz
 Janet Ferguson
 Phyllis Ferrera
 George Fogel
 Nancy Foody
 Jessica Frasco
 Mary and Tom Frech
 Yevgeniya R. Barmash and Mikhail A. Furman
 Dalia Galvan Morales
 Raymond Garcia
 Sarah Gaul
 Anisha Gill
 Corey Glenn
 Roberta Glick
 Nicole C. Godinez
 Carolyn Goering and David Jacobs
 Colleen Golomski
 Leticia Gomez DelaCasa
 Mai Lynn Grajewski
 Bridget Galen
 Claire Galen
 Melinda Gray
 Audrey and Ron Grzywinski
 Katherine Guay
 Amy Gudgeon
 Jennie Gutierrez
 Adriana Guzman
 Tanasha Hall
 Jim Hanks
 Sari Hart
 Karen Haverkamp
 Emma Healy
 Maureen Hellwig
 Debbie Hew
 Natalie S. Hiebert
 Carmen Higgins
 Alison S. Hilton
 Kurt Hirsch
 Stephen and Beth Hoffman
 Linda Hogan and John Morrison
 Joanne Hopkins
 Margaret C. Howard
 Lisa Howell
 Spencer Huebner
 Beth Hufford
 Adam Jaffe
 Leslie Jellinek
 Ally Jerusal

Lacey Johnson
 Denise Johnson Aratkov
 Carla Jones
 Pamela Kaplan
 Robin Karlov
 Bob and Judy Kemp
 Jennifer Kirksey
 Patricia H. Kleeman
 Adina Kleiman and Allan Kensky
 Kelly Klingensmith
 Elaine and Ronald Kobold
 Danka Kormosova
 Annie Kratzmeyer
 Jacqueline Kretchmer
 Victoria Kyerematen
 Carmen Lago
 Sarah Lambeth
 Kate Lapin
 Rosemary Latter
 Walter Lau
 Karen Lau
 Hyo Lee
 Troy Leight
 Sheena Lewis
 James Lifton
 Cynthia L. Lillard
 Chang Lim
 Moncerrat Llamas
 Mary P. Loftus
 Vanessa Lopez
 Emily MacDonald
 Astrid Mack
 Mallika Madhusudan
 Jocelyn Magana
 Debra Maltz
 Stephanie Maras
 Patrick and Carrie Marr
 Rickard Martin
 Tereza Martinez
 Paris McClendon
 Kathleen A. McGuire
 Caitlin McNally
 Jan McNulty
 Linda Michaels
 David and Janet Midgley
 Dawn H. Miller
 Nicole Minadeo
 Sali Mishra
 Gary Missner
 Blake Mooney
 Barbara Moran
 Tom E. Murray
 Lilita Navarrete
 Margie Newman
 Charlotte M. Niznik

● Staff during FY25
 ▲ Governing Board
 ● Foundation Board
 ◆ Associate Board
 ■ Multi-year Grant
 ● Deceased

Cheyla Noriega
 Laura L. Nozicka
 Susan and Mark Nystuen
 Tiffany Okoniewski
 Denise Oleske
 Emily Olson
 Vanessa Ortega
 Mariam Pahl
 Michele and Thomas Paladino
 Val Papirnik
 Christina Papirnik
 Nilay Parikh
 Barry Paul
 Kate Paz
 Linda Pfeffer
 Jon Phillips
 Brigitte Pintz
 Christine and Terrence Porter
 Christy Prael
 Camille Psenka
 Laurene Raleigh
 Susan and Bill Ratzer
 Lynn and Phil Rauch
 Patricia and Robert Reece
 Amy and Doug Reilly
 Guadalupe I. Reyes
 Marlene Richmond
 Kirsten Robb-McGrath
 Richard J. Romanowski
 Beverly Rose
 Piper and Jono Rothschild
 Alejandra Rubalcava
 Jane Sanjinez
 Kathryn Sanserino
 Darius Smith
 Rev. Edward and Linda Sarden
 Erin Sarris
 Margie Schaps and Jack Doppelt
 Jeff Schneider
 Alice Setrini and Chris Norborg
 Ankur Shah MD
 Jayanti Shah
 Anne and Eric Shain
 Jane Shapiro
 Satish Sheth
 Michele Shubitowski
 Joe and Jacqueline Shubitowski
 Jonathan Siner
 Francheska Santos
 Juan Solana
 Kiersten Solis
 Barbara Solit
 Daisy Sosa
 Barry Spector
 Aaron Steinbrecher and Bridgett Colling
 Amy Stocker

Larry Stoler
 Elaine Stottmeister
 Laurie Streeter
 Suela Sulo
 Caryn Summer and Bradley Reiff
 Elizabeth Swann
 Christopher Swanson
 Susan and Andy Sweeney
 Jennifer Tello
 Kim Tomich
 Chevonne Toney
 Juana Torres
 Doug Trezise
 Beth Truett Haagen
 Madeline Urban
 Aurea Urquiza
 Natalie Vallone
 Beth Valukas and Peter Barash
 Ruth Vasquez
 Barb Vicory
 Jennifer Villafuerte
 Kathy and Michael Violtt
 Jay Webb
 Catherine and Robert Wegrzyn
 Judith Weinstein
 Alexis Wells-Loneman
 Kimberly Williams
 Leslie Williams
 Elizabeth and Robert Wood
 Lucy M. Wright
 Mustafa Yar-Khan
 Jessica Young and Ryan Hajen
 Ryan Hajen
 Yasmin Zaragoza
 Dee Zarnowski
 Ellen Zemel

Up to \$99

Anonymous (3)
 Nataly Abarca
 Cecilia Ackmann
 Stephanie Acosta
 Mary Aguilar
 Camilla Alani
 Mary Carmen Zaragoza Alcocer
 Itzel Alvarez Leon
 Ivis Amaya
 Sam Anderson
 Sonia Andrade
 Sophia App
 Phoebe Arbogast
 Jennifer Arce
 Margaret Armalas
 Erika Arnold
 Carina Arroyo
 Angel Arroyo
 Mirna Asham
 Sheila Ashby Schultz
 Kylie Ayala
 Nida Bajwa
 Kamillah Banks-Word

Beth Bauer
 Takeshia Baugh
 Duane Becker
 Regina Bence
 Marco Benitez
 Amit Bhatia
 Mary and Morris Birdwell
 Janet Blachman
 Susan Black
 David Blanco
 Naomi Blumberg
 Ariel Bradley
 Eric Brissman
 Liz Brito
 Perla Brito
 Chloe Brodner
 Nancy Burke and Steve Harp
 Nathan and Jeanna Burkett
 Laura Burks
 Yuridia Calderon
 Pamela Callahan
 Kathy Campbell
 Angela Candelario
 Alissa and Ryan Carlson
 Tilea Carter
 Elizabeth Cassidy
 Celeste Castillo
 Virginia Cernak
 Hillary Chadare
 Regis and Leigh Ann Charlot
 Leslie Chenoweth
 Taylor Chin
 Michelle Chiu
 Samantha Chmielewski
 Lynne M. Clapman
 Kimberly Clark
 Karin and Mark Clark
 Allison Clark Young
 Martha Clarkson
 Kendra Clayborne Davis
 Jen Cody
 Melissa and Hayden Conant
 Liam and Francesca Connell
 Teresita Consunji
 Erin Costello
 Jill Cousino
 Carol Crawford
 Julie Danan
 Syed Danish
 Patricia M. Dasilva
 Geri and James Davis
 Muhammad Deen
 Stacey DeFilippo
 Ashley DeGarmo
 Maria Delgao
 Jayne Deno
 Swati Desai
 Hursh Desai
 Vanessa Diaz
 Daisy Diaz

Amy DiLello
 Shelly Dixon
 Tristan Dolik
 Elizabeth Dominguez
 Patricia Dudek
 Carol Edelson
 Maribeth Edwards
 Iman Emamifard and Nasim Masaeli
 Kenwyn Enriquez
 Debbie Erives
 Maryella Escobedo
 Ashley B. Estrada
 Donna Fasone
 Elizabeth Feldman and Jay Shefsky
 Jay Shefsky
 Michelle Feldman
 Lauren Fifarek
 Jazmin Figueroa
 Griffin Fillipitch
 John and Joan Fisk
 Shannon Flaherty
 Kaitlin Fleming
 Maria G. Flores
 Carmelita Flores
 Creighton Foulkes
 Jackie Freeman
 Margaret Freeman
 Carla and Mark Frisch
 Mary Fye
 Toral Gandhi and Ajai Tuli
 Herminia Garcia
 Joselyn Garcia
 Valerie Garcia
 Bill Garrity
 Johanna Garsenstein
 Emily Gates
 Debra Gittler
 Elisa Glubok Gonzalez
 Meghan Gold
 Dan and Erin Goldberg
 David Goldberg and Jo-Ann Finkelstein
 Jonathan Gonzalez
 Marixa Gorgas
 Jennifer Grant
 Gia Graves
 Jeffrey and Kate Greco
 Caroline F. Gries
 Mary Grigar
 Matt Grosdidier
 Letitia Guillaud
 Kato Gupta
 Luis Gutierrez Munoz
 Kerry Hagy
 Melanie Halvorson
 Patricia Hannon
 Marion Hanold
 Jeff Hansen
 Tiara Haralson
 Bryan Harrison
 Megan Harsh

Nyla Hartzel
 Laura Hatchet
 Rita Heitzinger
 Courtney Henry
 Rebecca A. Herigodt
 Clemente Hernandez
 Emmanuel Hernandez
 Roxana Hernandez
 Julie Hess
 William Higgins
 Bruni Hirsch
 Veliscia Hodges
 Lawrence Howell
 Olivia Howell
 Michael Huang
 Abosede Idowu
 Janine Jackson
 Rosalind Jackson
 William Jackson
 Madison Jerusal
 Larisa and Paul Jesinskis
 Altamush Jindani
 Brianna Jones
 Geri Jones-Sarpong
 Florecita Junia
 Allison Kaczmarek
 Amulya Kandikonda
 Daniel Kemp
 Nicole Kenner
 Scott Kettlewell
 Julie Kimbell and Rory Conolly
 Kiyomi Kimble
 Robert Knowles
 Ruben Koolman
 Dale and Clinton Krislov
 Franco La Marca
 Martha and George Lannert
 Denise Lau
 Victoria Lee
 Kathryn Leshner
 Nancy Lyons
 Liz Lyons
 Andrea Mackey
 Iridiana Magana
 Mariia Maksym
 Ma de la luz Mandujano
 Katherine Marchand
 Adrienne Marie
 Stephanie Marin
 Zoe Marshall
 Erane Martinez
 Monica Martinez
 Megan McAlarney
 Megan McGuane
 Tom McSparron
 Monica Mehta
 Judy Mendez
 Janett Mendiola
 Elvira Mendoza
 Drew Mendoza

Reuben Mendoza
 Emily Meyers
 Janice Miller
 Marcus Miller
 Paige Miner
 Ahresha Minter-Bey
 Mayra Miranda
 Leslie Mishel
 Ritika Mishra
 Alia Montijo
 Jeannette Montoya
 Laura Moon
 Stephanie Mora
 Maidely Moreno
 Alexandra Morreale
 Kelly Murphy
 Devin Clare Murray
 Lucie Nakonechy
 Maria D. Nickerson
 Cristina Nieves
 Hokuto Nishioka
 Robyn Nisi
 Linda Noworul
 Crystal Nunez
 Kira Palmer
 Meera Patel
 Sandra and Nick Paterakos
 Meghan Paulas
 Loni Pazich
 Freddy Ernesto Peralta
 Ariel Perez
 Johnny Perez
 Karen Perez
 Nancy Perez
 Ellen Petrick
 Miranda Pettengill
 Anna Phalen
 Lynn Philipson
 Panna Pithadia
 Neil Pithadia
 Laura Poucher
 Jodi and Glenn Preminger
 Carmen Preston
 Elizabeth Pruet
 Patricia Pruitt
 Ramcel Quien
 Maira Eliza Quizhpi
 Natalie Raghu
 Rebecca Raudabaugh
 Emily Reagan
 Sumi Rebiero
 Maurice Redding
 Ravali Reddy
 Maria Renteria
 Adriana Restrepo
 Stacey Rex
 Ingrid Richter
 Schuyler Ritchie
 Pamela Robles
 Grizel Roman
 Adriana Roman

Justin Romanoff
 Anais Romero
 Lisa Rubin
 Maggy Ruiz
 Fatima Saleh
 Twyla Sanchez
 Elizabeth Saucedo Zavala
 Esther Sault
 Quinn Scallon
 Molly Scarlata
 Jaclyn Schieber
 Kristen Schotke
 Casey Scott
 Raheel Shahzad
 Amy Sharma
 Hema Sheelvanth
 Devin Clare Murray
 Neeta Sheth
 Andrea E. Silva Alvarez
 Deepika Singh
 Cassie Skalicky
 Ally Skoog-Hoffman
 Carolyn Smigla
 Kevin Smith
 LaVerne Smith
 Catiuzka Sojos
 Alejandro D. Solano
 Heather Staniszewski
 Valeria J. Stokes
 Ian Koichi Swanson
 Pooja S. Tandon
 Rathi Tanoja
 Brenda Taylor
 Katina Thomas
 Natalie M. Thompson
 Evan Thompson
 Jared Ticktin
 Annie Tobin-Bartlow
 Adilene Torres
 Sonia Cruz Torres
 Nora Torres Yordan
 Daniel Tounsel and Ruby Long
 Hannah Trezise
 Matthew Trnka
 Elizabeth Tumiel
 Ryan Turner
 Zenaide Vallejo
 Jacqueline Vergara
 Alfreda C. Villapando
 Erika Vucko
 Jean Wagner
 Stephanie T. Wai
 Anna Ware
 Yadira Watson
 Jon Weber
 Vicki and John Whildin
 Meredith Whitfield
 Alan Williams
 Dwayne Williams
 Ted Word

Tawnie Yates
 Jack York
 Theresa Young
 Alex Yukhvidin
 Chris Yurik
 Shilpi Zalani
 Vanessa Zamora

In Kind Donations
 Abbott Laboratories
 All Together Now
 American Heart Association, Inc. (AHA)
 Barbecue
 Barcocina
 Born Again Barns
 Bright Endeavors
 Brookfield Zoo
 Chicago Architecture Tours



FROM LEFT: Juana Bonilla, Tracy Irwin, MD and Sergio Meza

Chicago Botanic Garden
 Chicago Cubs
 Chicago Fire
 Chicago Symphony Orchestra
 Lynne Clapman
 Classic Kids
 Clean Your Dirty Face
 Cooper's Hawk
 CrossTown Fitness
 Michael Cruz
 Cuddle Bunny
 Culaccino
 Drunk Shakespeare
 Edgewater Candles
 Field Museum
 Fiori Designs Boutique
 Four Seasons Hotel Chicago
 Foursided
 Garfield Conservatory

● Staff during FY25
 ▲ Governing Board
 ● Foundation Board
 ◆ Associate Board
 ■ Multi-year Grant
 ● Deceased

Half Acre Beer Co.
 Jeni's Ice Cream
 Kathleen W Portraits
 Koval Distillery
 Lettuce Entertain You Restaurants
 LillStreet Art Center
 Logan Theatre
 Long Grove Confectionery and Arway Confections
 Lou Malnati's Pizzeria
 Lyric Opera of Chicago
 Morton Arboretum
 Paperish Mess
 Portillo's
 Raising Canes Restaurants, L.L.C.
 Revolution Brewing
 Second City
 Skydeck Chicago
 Stretchlab
 Teatro ZinZanni
 The Joffrey Ballet
 The Malkin Family
 The Social Dance Studio
 The Urban Canopy Compost Club
 Trader Joe's
 Twisted Scissors
 Uncommon Ground Lakeview Yard House
 YumDum
 Zanies
 Zen Yoga Garage

Matching Gifts

Abbott Laboratories
 AbbVie Foundation
 Adobe Systems, Inc.
 American Express
 Apple
 CIGNA HealthCare
 Coca-Cola
 Global Payments
 Google Inc.
 James Hardie Building Products
 Jones Lang LaSalle Incorporated (JLL)
 LabCorp
 Marsh & McLennan Companies, Inc
 Mercer Health and Benefits
 Merck
 Morningstar, INC.
 Salesforce
 The Walt Disney Company Foundation
 Thermo Fisher
 UnitedHealth Group
 Walker & Dunlop
 West Monroe

COMMEMORATIVE GIFTS

In Memory Of

ANTHONY ARROYO
 Carina Arroyo

LORRAINE ASHLEY
 Carol Crawford
 Melanie Halvorson
 Nyla Hartzel
 Beth Hufford
 Linda Michaels
 Michele and Thomas Paladino

BRIAN CHEW
 The M and S Giving Fund

ARLENE CIERNY
 Cathy Junia and Andrew Cierny

EVER SALGADO DE FLORES
 Javier Flores

SHARLENE GARFIELD
 David Leib and Anne Gendler

JOSEPH HANKES
 Jim Hankes

RICHARD HUTSON
 Thomas Toser

IRMA LEIB
 David Leib and Anne Gendler

RUDOLPH MCKINNEY AND ALBERTO M. PARACCHINI
 William G. and Joan Kistner

MARCELLA AND JOSEPH NIZNIK
 Charlotte M. Niznik

MARY ANN OCZKOWSKI
 Mary and Morris Birdwell
 William and Mary Greene

KATHLEEN O'DONNELL
 Maureen O'Donnell and Jim Spencer

ERVIN PASIA
 Syed Danish

MARNI RABEN
 Leva Family Foundation

ANITA REDDING
 Maurice Redding

RALPH REICHERT
 Amy Reichert and Sam Fleischacker

RICHARD AND RAE ROBINS
 David Leib and Anne Gendler

MARJORY RUSSELL
 Susan and Andy Sweeney

RITA SPERANZA
 Caryn and Charles Brissman

ZEKE SWANSON
 Anonymous
 Ian Koichi Swanson

RABBI VICTOR AND TAMAR WEISSBERG
 Alona Anspach

BERT WELLER
 Sandra Hutson

KRISTIN WORD
 Ted Word

MARY WORTHINGTON
 Paula Worthington and Bruce Meyer

In Honor Of

ALL THE EFHC NURSES
 Sally and Steve Lundeen

LAURA BANKS
 Carol Ann and Jerry Burin
 Meredith and Phil Dray
 Claire and Thomas Goulding
 Rickard Martin
 Carine and Robert McGreevey
 Anne and Eric Shain
 Amy Stocker
 Elizabeth Swann

NANCY BOCK
 Mary and Jeffrey Sherman

JOANNE AND LIZZY BURGESS
 Michael McHugh

WILLIAM CAPE
 Frances Griffin
 Patricia H. Kleeman

ERIN CAVANAUGH
 Philip and Meg Cavanaugh

ELAINE COLDREN
 Foundation for Equity and Justice

LINDA CUSHMAN
 Mr. and Mrs. Norman Bobins,
 The Robert Thomas Bobins Foundation
 Willard and Anne Fraumann
 Linda Hall
 Denise C. Macey
 Andrew H. Rubenstein

ROSE NAVARRO
 Ann E. Doege

LIZ FELDMAN AND MIRANDA HART
 Roberta Glick

ANDREW FOLEY AND DANIKA BARRY
 Michele and Tom Foley

BRENDA FOWLER
 Kurt Hirsch

KENNETH FOX
 Frank Connet

LEE FRANCIS AND ERIE STAFF
 David Meyers and Roberta Strickler

AMY VALUKAS
 Beth Valukas and Peter Barash

VICTORIA WEISENBERG
 William and Mary Greene

MICHAEL WENDT
 Carol Wendt

ALLISON CLARK YOUNG
 Ally Skoog-Hoffman

AVERY HART
 Elizabeth Feldman and Jay Shefsky

MIRANDA HART
 Avery Hart and Nina Black
 Jane Shapiro

MELISSA HILTON
 Neil Fisher and Meryl Loonin
 Giannina Riccardi

LAURA LAMP
 Pamela Robles

LILY, ELLA & JAMIE
 Sara and Ted Naureckas

TRACY LYONS
 Jodi and Glenn Preminger

JACKIE MCSPARRON
 Heather Staniszewski

DAVID MEYERS
 Emily Meyers

DEBBIE MIDGLEY
 Barbara Solit

MARA MOTLEY
 Anonymous

LARRY AND RONNA NIERMAN
 Barry Spector

SAVANNAH PAUL
 Karin and Mark Clark
 Barry Paul

RICHARD ROMANOWSKI
 Nancy Boszhardt

HANNAH RUWE AND BEN CARBERY
 Michele and Tom Foley

JILL SVOBODA
 Susan and Dwight Sipprelle

THE BANKS FAMILY
 Cindy and Alan Curley

ZACH TROMLEY
 Jack York

ALEJANDRA VALENCIA
 Steven Geiermann

AMY VALUKAS
 Beth Valukas and Peter Barash

VICTORIA WEISENBERG
 William and Mary Greene

MICHAEL WENDT
 Carol Wendt

ALLISON CLARK YOUNG
 Ally Skoog-Hoffman

- Staff during FY25
- ▲ Governing Board
- Foundation Board
- ◆ Associate Board
- Multi-year Grant
- Deceased



Natasha Thern, MD stands behind three generations of Erie patients: Michaela Chovey, Maria del Pilar Sanchez, and baby Jay.

ERIE FAMILY HEALTH CENTERS BOARD MEMBERS AND AFFILIATIONS

Through December 31, 2025

Erie Family Health Centers Board of Directors

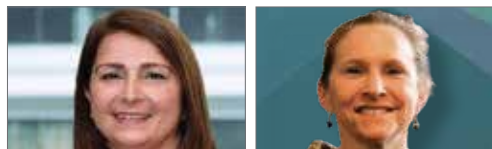
OFFICERS

Brian P. Marsella <i>Chair</i>	William G. Kistner <i>Treasurer</i>
Carolyn Dickens <i>Vice Chair</i>	Celeste Castillo <i>Secretary</i>

BOARD MEMBERS

Matt Aaronson <i>Managing Director and Senior Partner The Boston Consulting Group</i>	William G. Kistner <i>Retired Partner Ernst & Young</i>
Rosalie Alicea <i>Community Volunteer</i>	Ngan MacDonald* <i>Chief of Data Operations Northwestern University Institute for AI in Medicine</i>
Betsy Berganza <i>Director of Health and Human Services YWCA Metropolitan Chicago</i>	Brian P. Marsella <i>President HPS/PayMedix</i>
Nancy Bock <i>Retired Executive Director HealthReach, Inc.</i>	Judy Mendez <i>Community Volunteer</i>
Michael Boyd <i>Community Volunteer</i>	Richard J. Romanowski <i>Community Volunteer</i>
Celeste Castillo <i>Community Volunteer</i>	Rev. Edward Sarden <i>Senior Minister Christian Church Center</i>
Abraham Celio <i>Community Volunteer</i>	Luis "Fernando" Sarmiento <i>Community Volunteer</i>
Ernest Chang <i>Senior Advisor BMO Harris Bank, N.A.</i>	Alice Setrini <i>Clinical Teaching Fellow Loyola University of Chicago School of Law</i>
Linda Cushman <i>Retired Principal Hewitt Associates</i>	Dianna Sparacino* <i>Chief People Officer Endeavor Health</i>
Carolyn Dickens <i>Assistant Dean for Faculty Practice & Community Partnerships; Clinical Assistant Professor College of Nursing University of Illinois at Chicago</i>	Jill Simon Svoboda <i>Community Volunteer</i>
Lisa Dykstra* <i>CIO Strategic Advisor to CHIME</i>	Katherine Wilson <i>Community Volunteer</i>
Leah Hobson <i>Vice President, Finance Northwestern Memorial HealthCare</i>	HONORARY BOARD MEMBERS
	Michael Cole <i>President Regence BlueCross BlueShield of Oregon and Regence BlueShield</i>
	Eric Mayeda <i>Director The Chartis Group, LLC</i>

Erie honors the legacy and impact of treasured board leaders whom we lost in 2025



Lisa Dykstra
Governing Board

Lisa Schneider Fabes
Foundation Board

Erie Family Health Centers Leadership

EXECUTIVE LEADERSHIP TEAM

Lee Francis, MD, MPH
President and CEO

Tracey Clarke, MBA, PHR
Chief Human Resources Officer

Caroline Hoke, MD
Chief Clinical Officer

Nicole Kazee, PhD
Chief Strategy and Transformation Officer

Stephanie Smith, CPA
Chief Financial Officer

Amy Valukas, MPH
Chief Population Health Officer

Robin Varnado
Chief Operating Officer

Melissa Hilton
*Vice President Development
Executive Director
Erie Family Health Foundation*

Josie Llana
*Vice President
Population Health*

Kellie Medious
Vice President Operations

David C. Bruce, CPA
Special Projects Executive

ASSOCIATE BOARD

Adam Dajani
Co-Chair

Lily Proudman
Co-Chair

Celeste Goering
*Development
Committee Chair*

Michael Wendt
*Member Engagement
Committee Chair*

Harte Brick

Sylvie Brick

Sander Brissman

Michaela Ciulla

Drew Fischer*

Megan Garrett

Natalie Hiebert

Rachel Holt

Jake Howell

Jason Kephart

Rachel Lowen

Mallika Madhusudan

Callahan Manuel

David Prabhu

Annalycia Ramotar

Carla Rubalcava

Francheska Santos

Jaclyn Sliger

Darius Smith

Caitlyn Sodergen

Friends of Erie Evanston/Skokie Health Center

Missy Fleming
Co-Chair

Kathy Tisdahl
Co-Chair

Erie Family Health Foundation Board of Directors

Gauri Brown
*Chair
Community Volunteer*

Betsy Banks
Community Volunteer

Lisa Schneider Fabes*
*Principal
LSF Consulting*

Elizabeth Feldman, MD*
*Retired Site Medical Director
Erie Evanston/Skokie Health Center*

Lee Francis, MD, MPH
*President and CEO
Erie Family Health Centers*

Michele Marsella
*Compliance/Quality Assurance Analyst
Mindr*

Emily W. Martin
Community Volunteer

Lory Mishra
*Principal Product Marketing Manager
Adobe*

Feyce Peralta, MD, MS, FASA
*Obstetric Anesthesiologist
Northwestern Medicine*

Jeff W. Sherman, MD, FACP
*Chief Medical Officer Emeritus
Now Retired
Horizon Therapeutics
Rare Disease Now Amgen*

Val Weiss
*Senior Grants and Planning Manager
JCFS*

HONORARY DIRECTORS

Nancy Bock
*Retired Executive Director
HealthReach, Inc.*

Amy Blumenthal
*Managing Partner
Gould & Ratner*

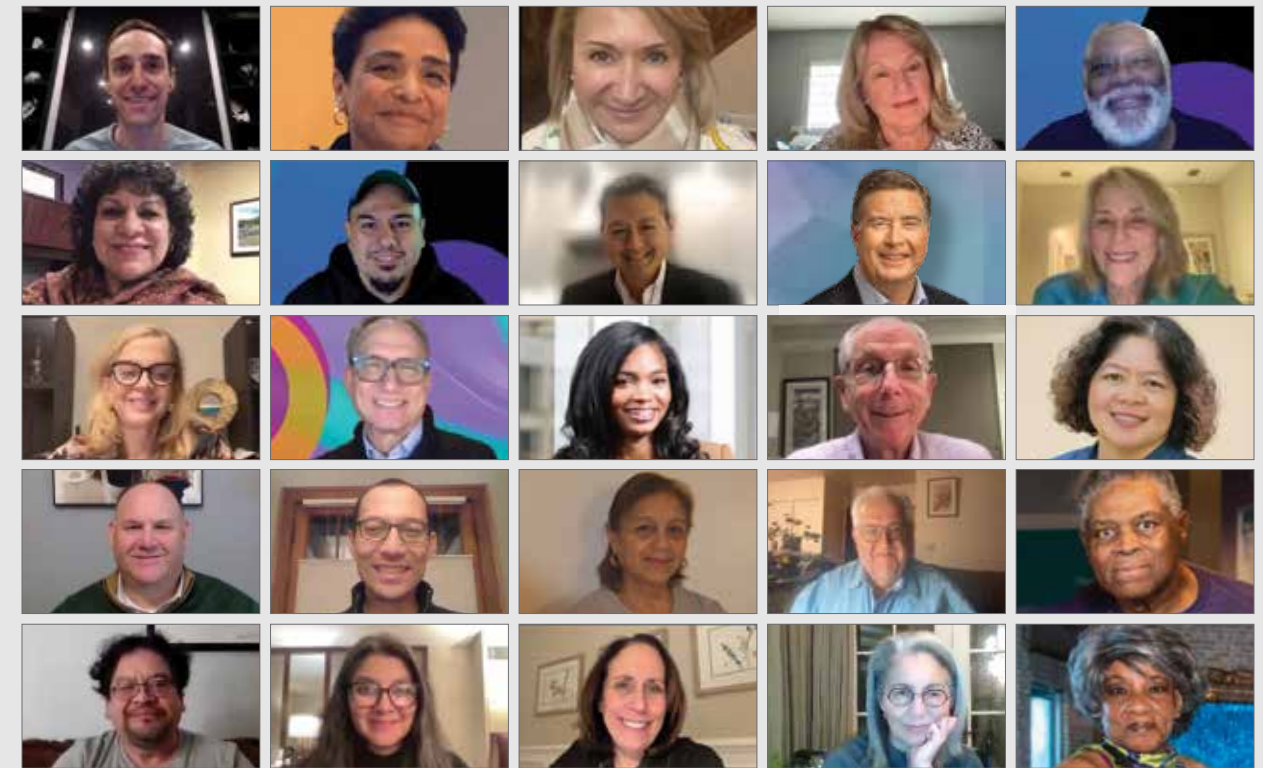
Linda Cushman
*Retired Principal
Hewitt Associates*

Hon. Susan Garrett
*Civic Leader
Former Illinois State Senator*

- Board term ended in 2025
- Stepped down in 2025
- Joined in 2026
- Deceased

Erie's Boards of Directors met virtually in 2025.

Erie Family Health Centers Board of Directors

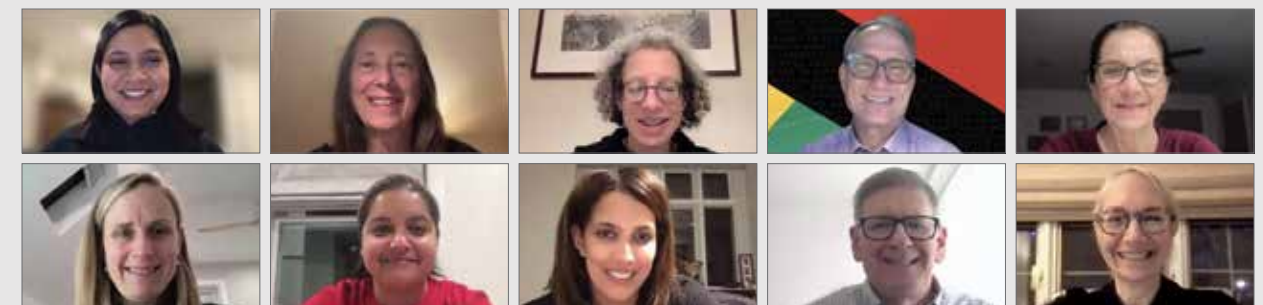


TOP ROW DOWN, LEFT TO RIGHT:

Matt Aaronson, Rosalie Alicea, Betsy Berganza, Nancy Bock, Michael Boyd, Celeste Castillo, Abraham Celio, Ernest Chang, Michael Cole, Linda Cushman, Carolyn Dickens, Lee Francis (President and CEO), Leah Hobson, Bill Kistner, Ngan MacDonald, Brian Marsella, Eric Mayeda, Judy Mendez, Richard Romanowski, Rev. Ed Sarden, Luis Sarmiento, Alice Setrini, Dianna Sparacino, Jill Svoboda, Katherine Wilson

59% of Erie's Board of Directors are patients or parents of patients.

Erie Family Health Foundation Board of Directors



TOP ROW DOWN, LEFT TO RIGHT:

Gauri Brown, Betsy Banks, Liz Feldman, Lee Francis, Michele Marsella, Emily Martin, Lory Mishra, Feyce Peralta, Jeff Sherman, Val Weiss



stay connected with erie

facebook

facebook.com/eriefamilyhealth

instagram

instagram.com/eriefamily

linkedin

[Erie Family Health Centers](https://linkedin.com/company/erie-family-health-centers)

vimeo

vimeo.com/erie

Nathalia Amesty is all smiles at Erie Humboldt Park.

